

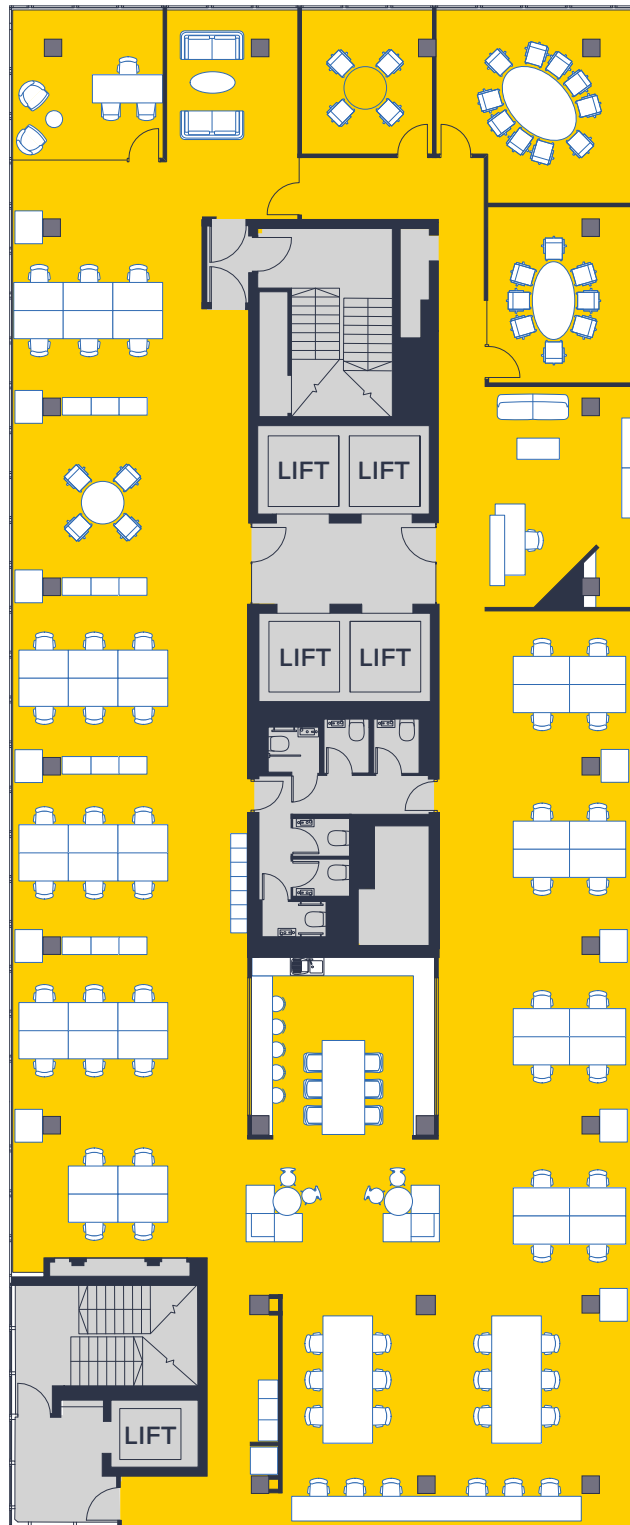
L17 space plan

6,311 sq ft

586 sq m

Basinghall Street

- Desks and chairs for people 64
(44 fixed desks)
- Meeting rooms (4/8/10 people) 3
- 1 executive office
- Kitchen area/breakout
- Dedicated welcome space



Part L18 space plan

3,810 sq ft

354 sq m

Desks and chairs for people (34 fixed desks)	45
Meeting rooms (8/10 people)	2
Kitchen area/breakout	
Dedicated welcome space	

Basinghall Street

