

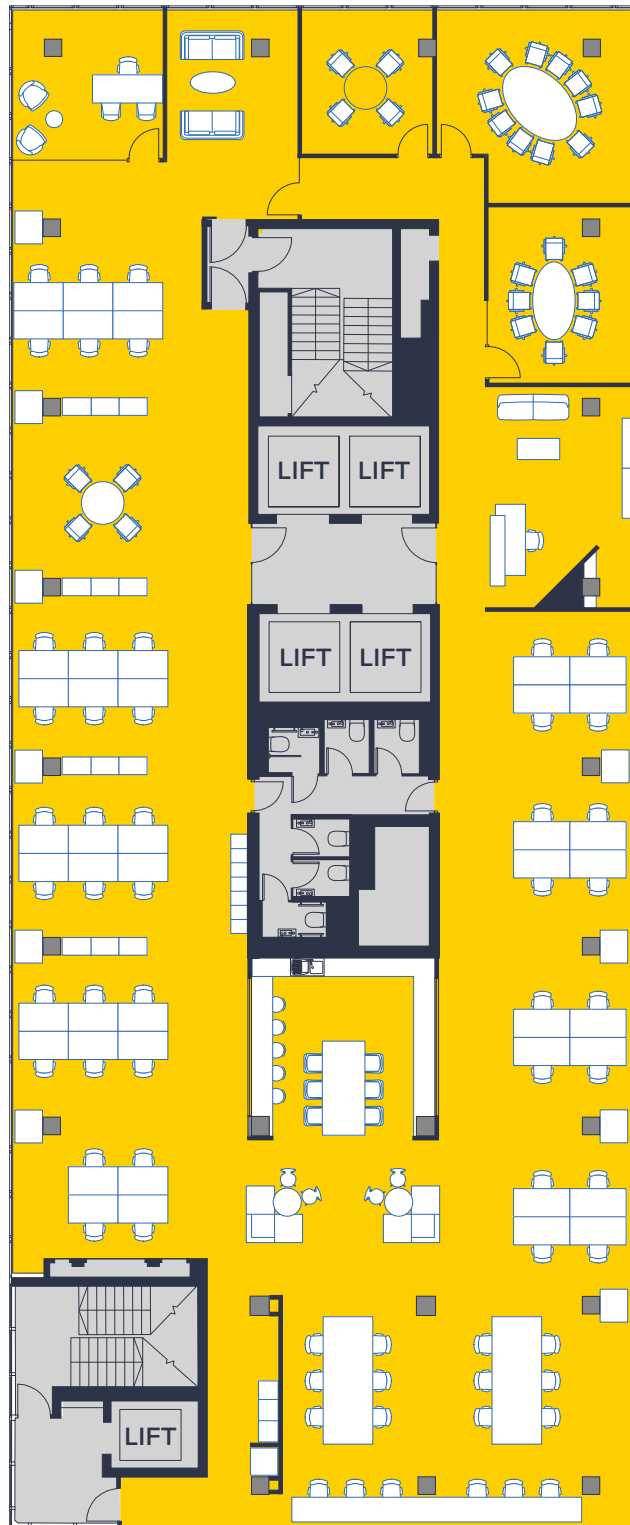
Typical floor Plug & play

6,363 sq ft

591 sq m

Basinghall Street

Desks and chairs for people	64
Open plan desks	44
Meeting rooms (4/8/10 people)	3
Executive office	1
Kitchen area/breakout	
Dedicated welcome space	



Plug & play split floor plan

3,810 sq ft

354 sq m

Basinghall Street

- Desks and chairs for people 45
(34 fixed desks)
- Meeting rooms (8/10 people) 2
- Kitchen area/breakout
- Dedicated welcome space

