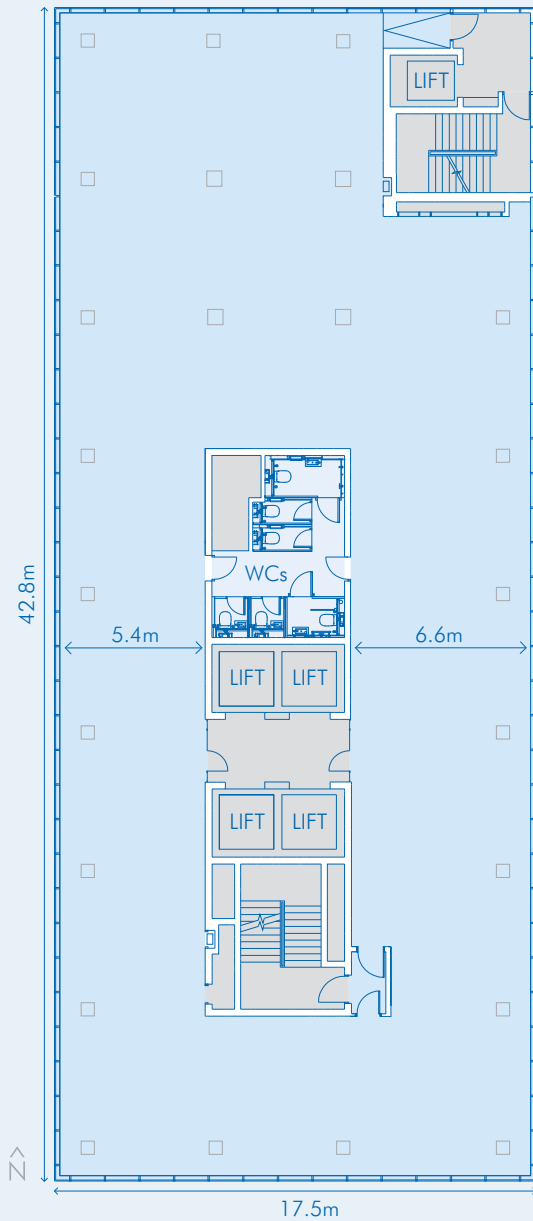
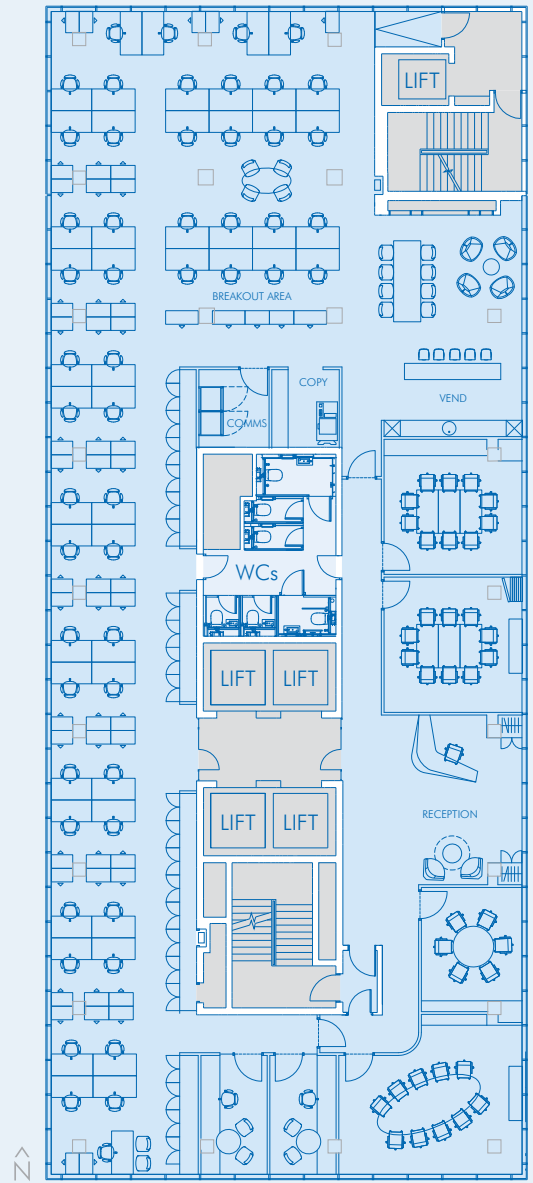


TYPICAL FLOOR



Net Internal Area 586 sq m / 6,311 sq ft



Net Internal Area 586 sq m / 6,311 sq ft

Open Plan Workstations 53

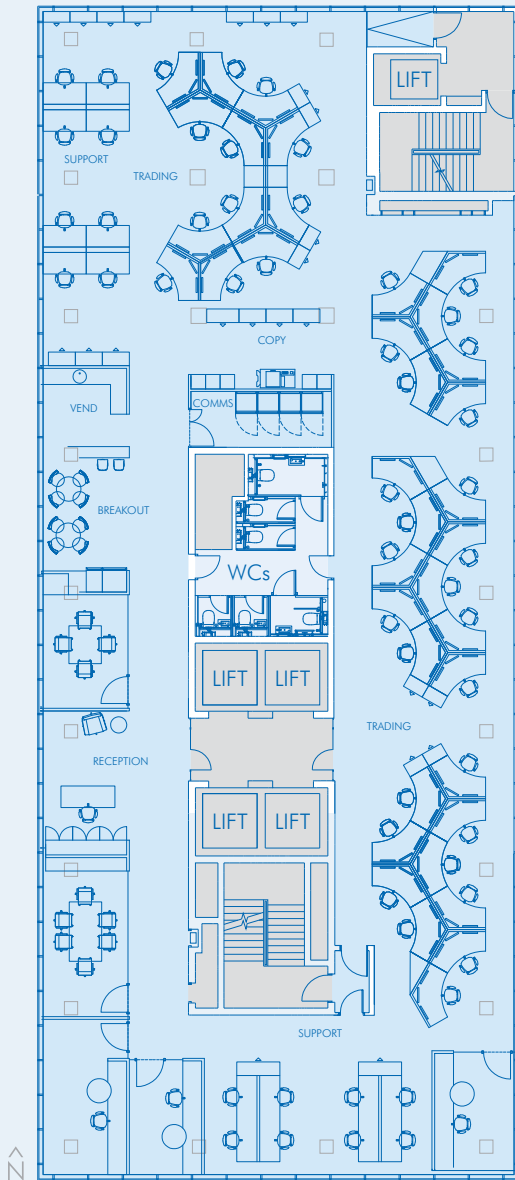
Single Offices × 2 2

Receptionist 1

Occupancy Density 1 per 10 sq m / 112 sq ft

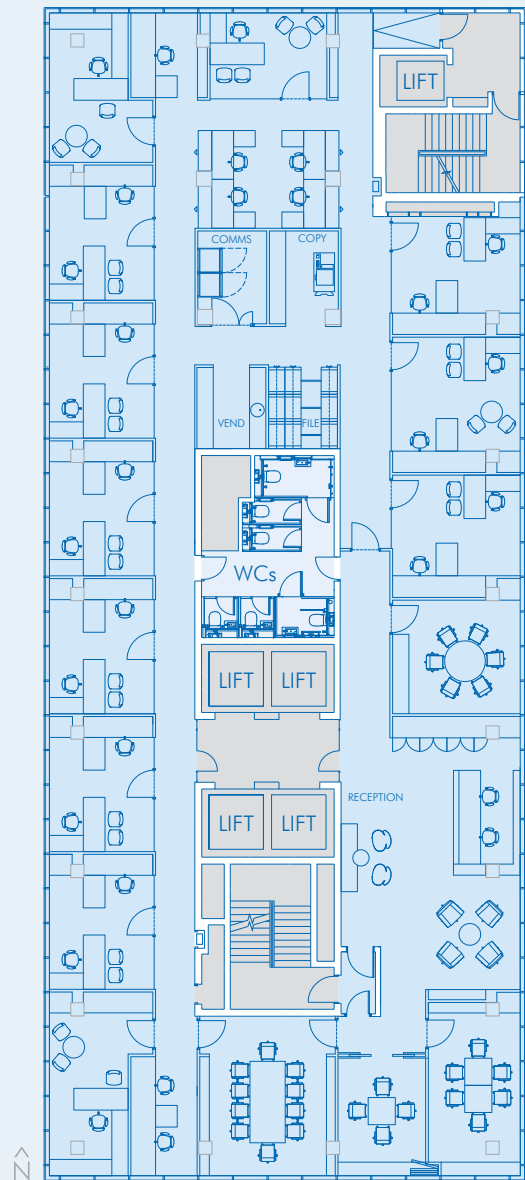
TOTAL HEADCOUNT 56

SPACE PLANS



FINANCIAL

Net Internal Area	586 sq m / 6,311 sq ft
Trading Positions	39
Support Workstations	16
Receptionist	1
Offices × 3	3
Occupancy Density	1 per 10 sq m / 107 sq ft
TOTAL HEADCOUNT	59



UK LEGAL

Net Internal Area	586 sq m / 6,311 sq ft
Single Partner Offices × 3	3
Double Fee Earner Office × 9	18
Fee Earner Totals	21
Secretaries (sec: fee earner ratio 1:4)	5
Business Support Staff & receptionist	4
TOTAL HEADCOUNT	30

CYCLE CENTRE

- 77 Spaces
- 168 Lockers
- 4 Male showers
- 4 Female showers
- 1 Disabled shower
- WCs
- Towel service
- Drying room

